

ASX: **KNG**



KINGSLAND
MINERALS

**Large, Leveraged
Australian Graphite
Opportunity**
November 2023

Resources Rising Stars Summer Series



Important

Nature of this document: The purpose of this presentation is to provide general information about Kingsland Minerals (ACN 647 904 014) (the 'Company'). Unless otherwise stated herein, the information in this presentation is based on the Company's own information and estimates as of the date of this presentation. In attending this presentation or viewing this document you agree to be bound by the following terms and conditions.

Not an offer or advertisement: This presentation is for information purposes and does not constitute or form any part of any offer or invitation to sell or issue, or any solicitation of any offer to purchase or subscribe for, any securities in the Company in any jurisdiction. This presentation and its contents must not be distributed, transmitted or viewed by a person in any jurisdiction where the distribution, transmission or viewing of this document would be unlawful under the securities or other laws of that or any jurisdiction. In particular, this presentation may not be distributed or released, directly or indirectly, in the United States. This presentation does not constitute an advertisement for an offer or proposed offer of shares. Neither this presentation nor anything contained in it forms the basis of any contract or commitment and it is not intended to induce or solicit any person to enter into, or refrain from entering into, any contract or commitment.

Not financial product advice: This presentation does not take into account the individual investment objectives, financial situation and particular needs of each of the Company's shareholders or potential investors. You may wish to seek independent financial and taxation advice before making any decisions with respect to this presentation. Neither the Company nor any of its related bodies corporate are licensed to provide financial advice in respect of the Company's securities or any other financial products.

Forward-looking statements: Certain statements in the presentation are or may be perceived as "forward-looking statements" and represent the Company's intentions, projections, expectations or beliefs concerning, among other things, future operating and exploration results or the Company's future performance. You are cautioned not to place undue reliance on any forward-looking statement. These forward-looking statements are based on current expectations at the date of this publication. The projections, estimates and beliefs contained in such forward-looking statements necessarily involve known and unknown risks and uncertainties and are necessarily based on assumptions, which may cause the Company's actual performance and results in future periods to differ materially from any express or implied estimates or projections.

Disclaimer: No representation or warranty, express or implied, is made by the Company that the material contained in this presentation will be achieved or prove to be correct. Except for statutory liability which cannot be excluded, each of the Company, its directors, officers, employees, advisers, agents and contractors expressly disclaims any responsibility for the accuracy, fairness, sufficiency or completeness of the material contained in this presentation, or any opinions or beliefs contained in this presentation, and excludes all liability whatsoever (including negligence) for any loss or damage which may be suffered by any persons as a consequence of any information in this presentation or any error or omission therefrom. The Company is under no obligation to update or keep current the information contained in this presentation or to correct any inaccuracy or omission which may become apparent or to furnish any person with any further information. Any opinions expressed in the presentation are subject to change without notice.

Unverified information: This presentation may contain information (including information derived from publicly available sources) that has not been independently verified by the Company.

Leliyn Graphite



**Significant
Graphite
Discovery**



**Leliyn has scale,
Drill intersections
>200m**



**Leliyn has
location, NT
Australia**



**Tier 1 Project
in a Tier 1
Location**

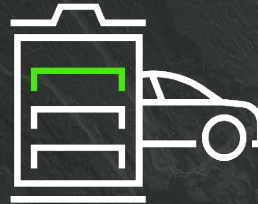
Why invest in Kingsland Minerals?



Kingsland 100% owns the Leliyn Graphite Project in the NT which hosts a 20km long outcropping graphitic schist



Outstanding average flake size of 50 – 80 micron, ideal for battery anode material



Graphite market forecast to move into deficit from this year on demand from lithium batteries for electric vehicles



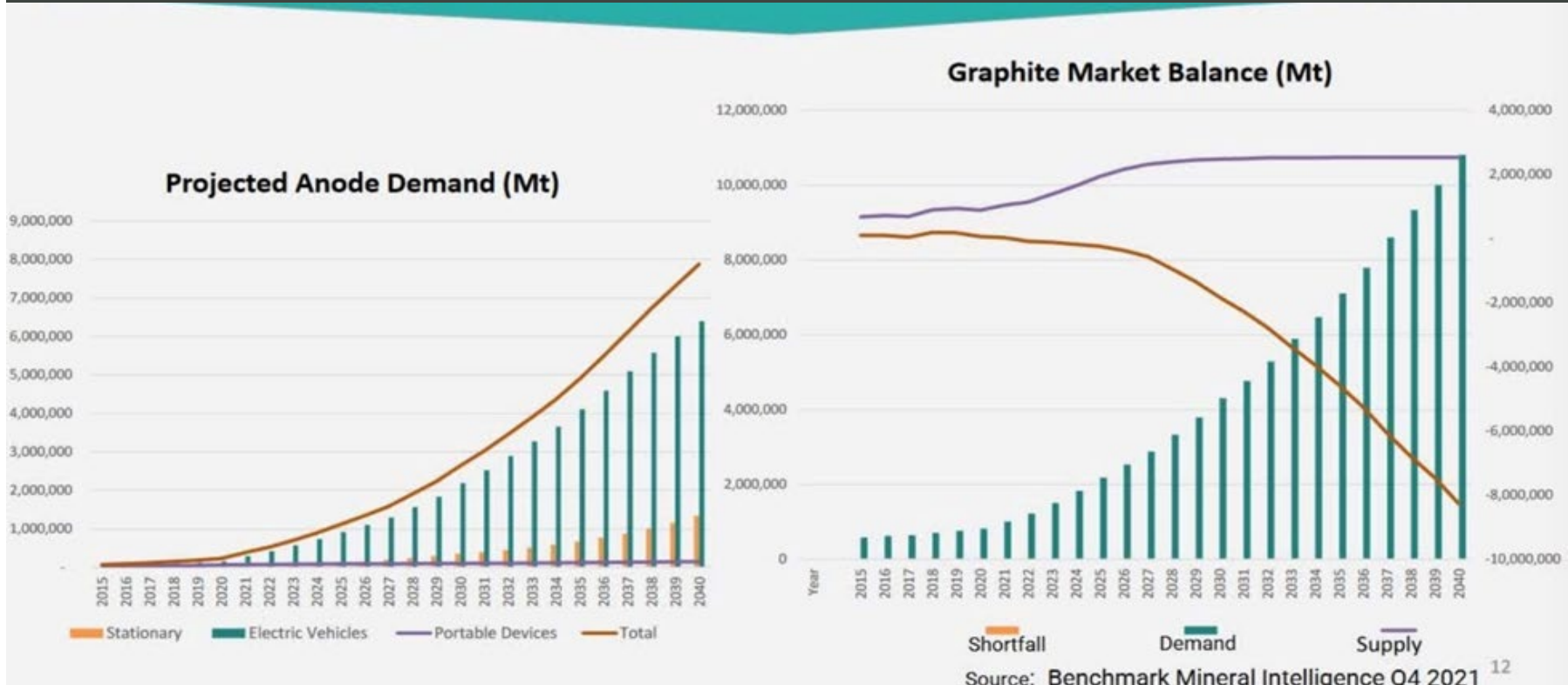
China to introduce export controls for graphite products from Dec 1 2023



Market cap at just \$15.2m (26c), \$3.7m cash, EV \$11.5m, strong news flow from upcoming maiden mineral resource and metallurgical test-work

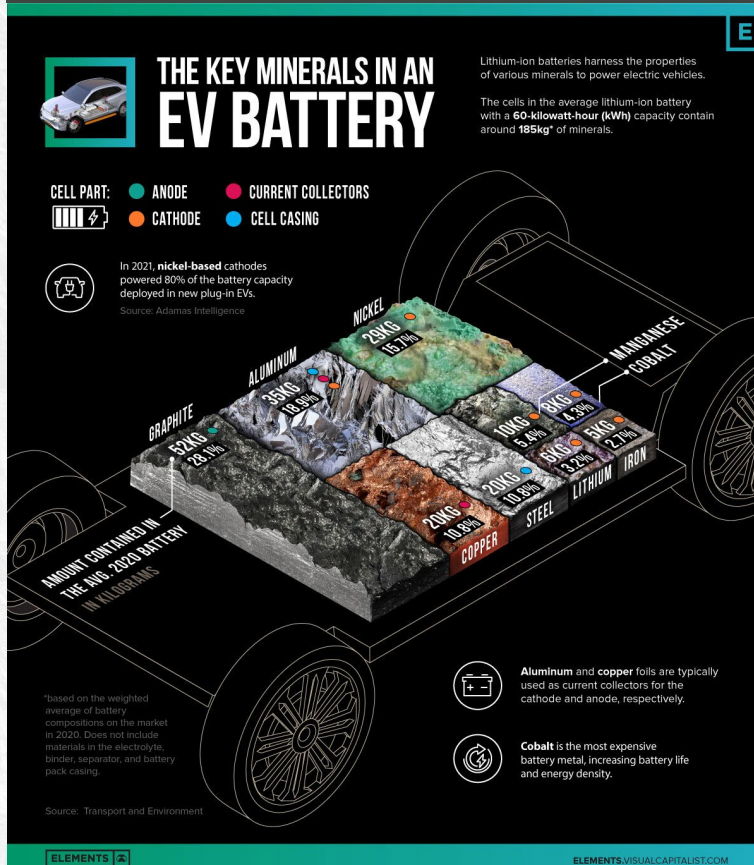
Graphite Flake Market Moving to Undersupply

Graphite shortage starting in 2023 | Shortage grow to 7Mt by 2040



Graphite Demand driven by Electric Vehicles

EU, UK, China ban ICE by 2035 | 8.4% of new car sales in Aust are EV's



Typical EV battery contains:

- 52kg Graphite
- 35 kg Aluminium
- 29 kg Nickel
- 20 kg Copper
- 20 kg Steel
- 10 kg Manganese
- 8 kg Cobalt
- 6 kg Lithium
- 5 kg Iron

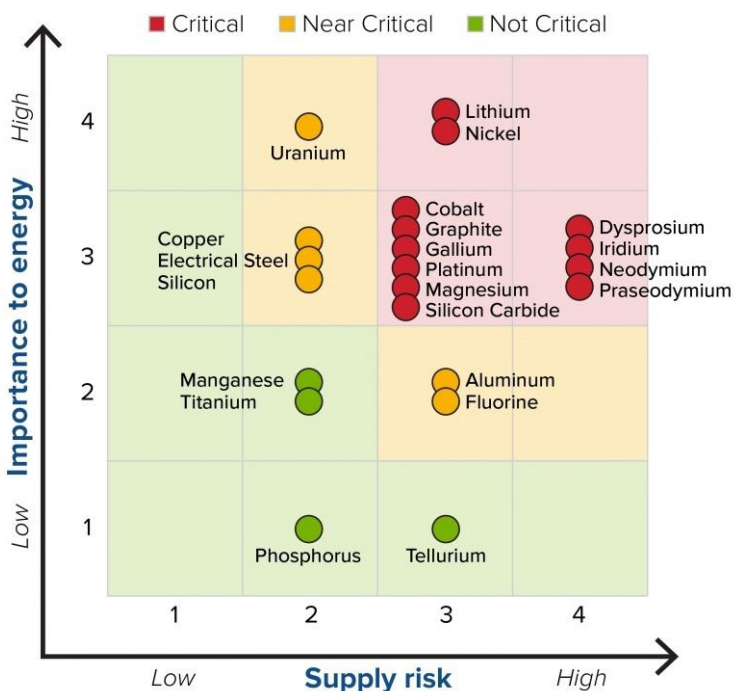
There is more graphite than anything else

Graphite demand will be driven by EV battery use. Internal combustion engines (ICE) phased out by 2035 in EU, China and UK

Australian Graphite Production – The Missing Link

Australia produces nearly all commodity inputs in a lithium-ion battery – **it doesn't produce graphite...yet**

MEDIUM TERM 2025-2035



Cobalt	²⁷ Co	Dysprosium	⁶⁶ Dy	Manganese	²⁵ Mn	Nickel	²⁸ Ni
Democratic Republic of the Congo	70.0%	China	48.7%	South Africa	35.8%	Indonesia	48.8%
Indonesia	5.4%	Myanmar	23.1%	Gabon	22.9%	Philippines	10.1%
Russian Federation	4.8%	Australia	7.6%	Australia	16.4%	Russian Federation	6.7%
Canada	2.1%	Others	2.9%	India	2.4%	France (New Caledonia)	5.8%
Cuba	2.0%	Canada	2.7%	Ghana	4.7%	Australia	4.9%
Philippines	2.0%	Others	15.0%	Brazil	2.0%	Canada	4.0%
Others	10.5%	Graphite	0%	Ukraine	2.0%	China	3.3%
		China	64.6%	Côte d'Ivoire	1.8%	Brazil	2.5%
		Mozambique	12.9%	Malaysia	1.8%	Others	13.9%
		Madagascar	8.4%	Others	5.3%		
		Brazil	6.6%				
		Others	7.5%				
Copper	²⁹ Cu	Neodymium	⁶⁰ Nd	Platinum	⁷⁸ Pt		
Chile	23.6%	China	45.8%	South Africa	73.6%		
Peru	10.0%	Australia	23.1%	Russian Federation	10.5%		
Democratic Republic of the Congo	10.0%	Greenland	8.2%	Zimbabwe	7.8%		
China	8.6%	Myanmar	7.4%	Canada	3.1%		
United States	5.9%	Brazil	4.4%	United States	1.7%		
Russian Federation	4.5%	India	2.1%	Others	3.3%		
Indonesia	4.1%	Others	9.0%				
Australia	3.7%						
Zambia	3.5%	Iridium	⁷⁷ Ir	Lithium	³ Li		
Mexico	3.3%	South Africa	88.9%	Australia	46.9%		
Kazakhstan	2.6%	Zimbabwe	8.1%	China	30.0%		
Canada	2.4%	Russian Federation	2.9%	China	14.6%		
Poland	1.7%	Others	0.1%	Argentina	4.7%		
Others	16.1%			Brazil	1.6%		
				Others	2.2%		

* Kingdom of Denmark

International Renewable Energy Agency 2023

* latest data available as of 2023

Source: (US Geological Survey and US Department of the Interior, 2023; JRC, 2020; USGS, 2023b).

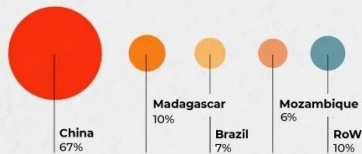
Graphite Production Source – All eggs in one basket

China dominates supply of raw, processed and refined graphite products – **time to diversify**

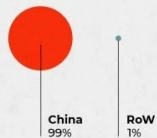
Natural Graphite Anode

Source: Benchmark's Natural Graphite Forecast

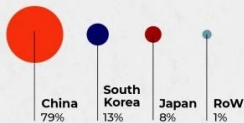
Mined graphite



Spherical graphite



Natural graphite anode



Natural graphite supply chain

75%

Tonnes per annum
(weighted 2023 supply)

Feedstock Supply



Value Add Supply



Anode Active Material Supply



Source: Benchmark's Anode Forecast

China's Dominance
% of supply chain in China



Graphite market controlled by ONE main supplier – China

**67% of raw flake graphite
99% of spherical graphite
79% of natural graphite anode**

China will introduce export controls for flake graphite and spherical graphite on 1 December 2023

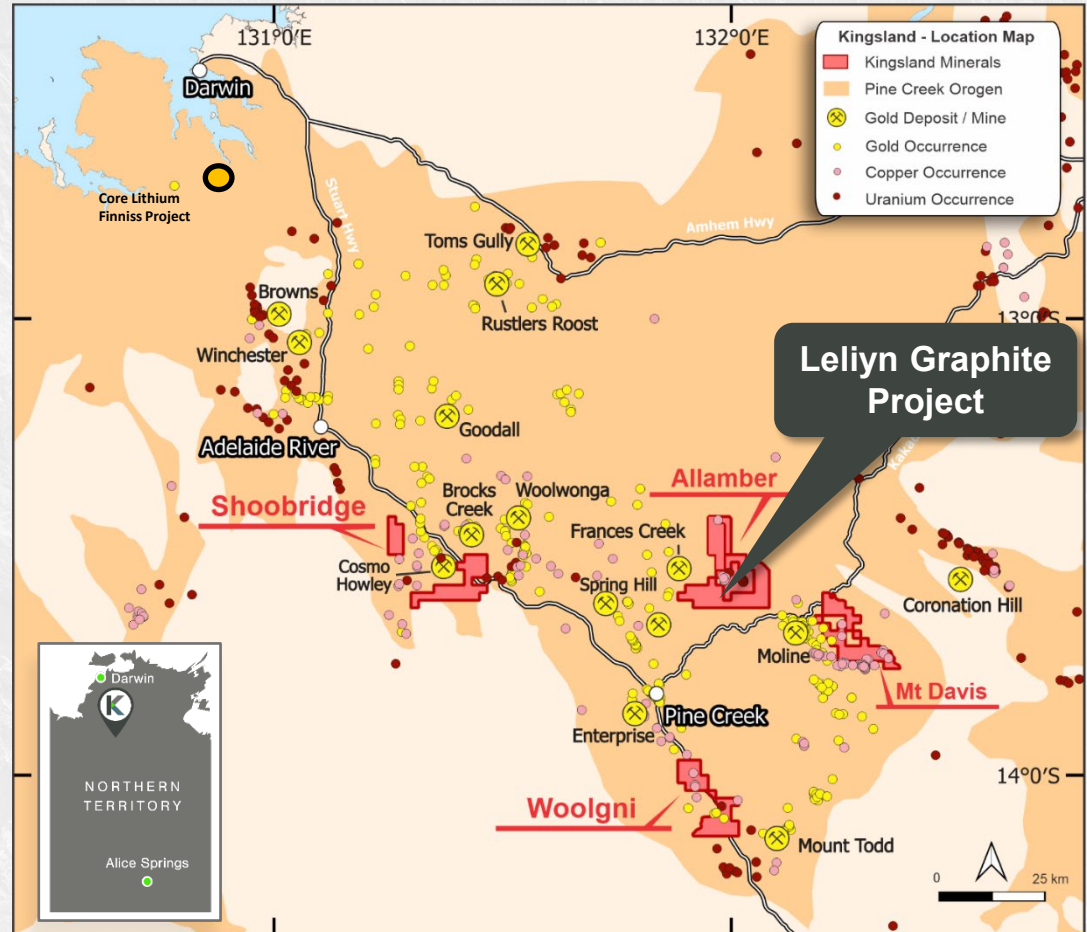
Excellent Location

Excellent location in the Pine Creek mining district

250km from Darwin Port with direct rail access

Existing Infrastructure with a long history of mining and exploration

Located on Perpetual Pastoral Lease



Infrastructure in Place

Existing Infrastructure

Rail loading area used for Frances Creek Iron Ore Mine in 1970's

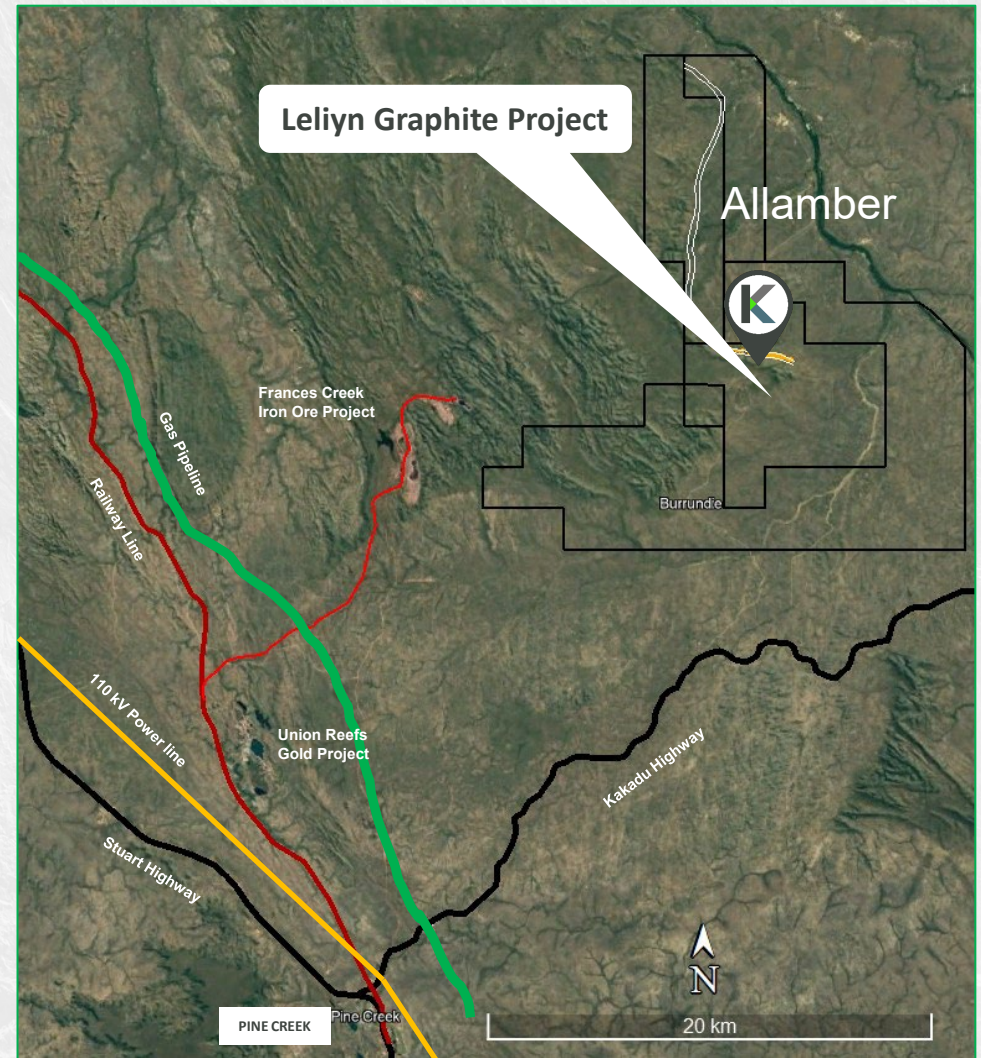
Haulage road from Frances Creek to rail loading area.

Sealed Kakadu and Stuart Highways

110 kV power line

Gas pipeline

Pine Creek, accommodation, fuel etc



Leliyn Graphite

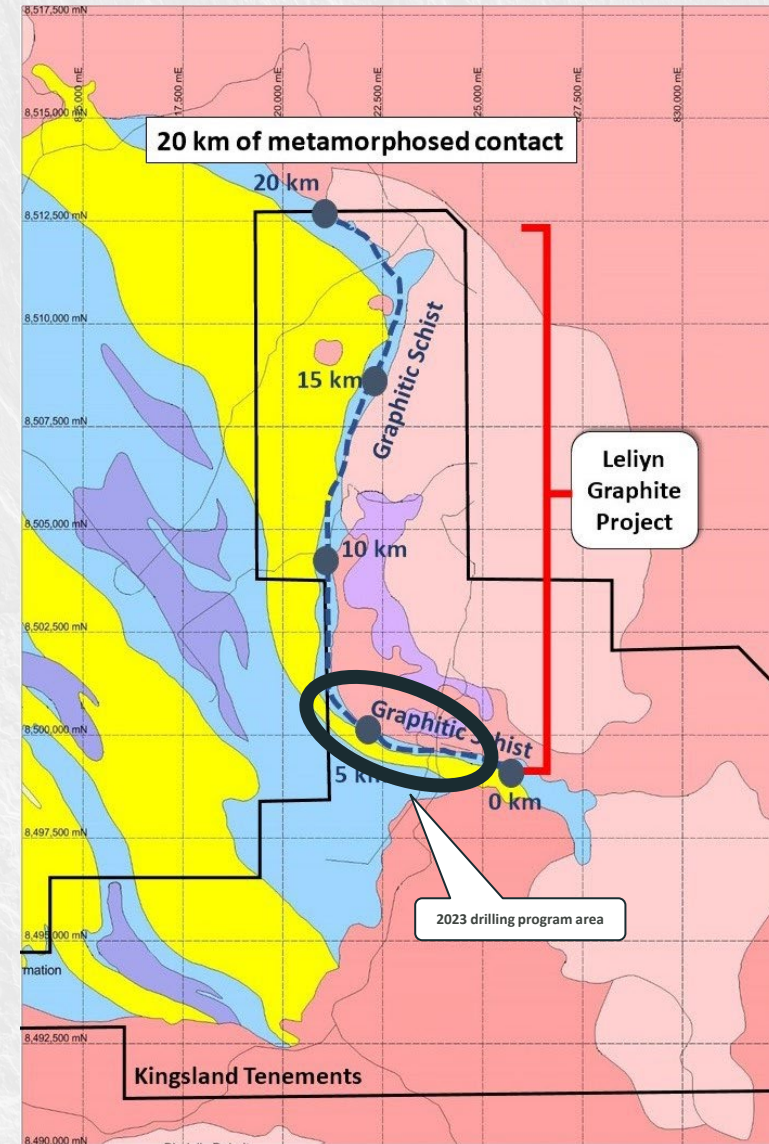
Drilling since May 2023

- 53 RC holes for 5,400m
- 11 Diamond Core holes for 2,400m
- 4 diamond holes pending assays

Drilling finished mid-November before wet season to support Maiden JORC Resource anticipated Q1 CY2024

Maiden JORC Resource based on initial 5km of total 20km graphitic schist

Metallurgical samples submitted for testwork to confirm ability to produce commercial grade concentrate; anticipated for Q1 CY2024



Leliyn Graphite

Significant Intersections include:

- **206m @ 10.02% from 0m (LEDD_05)**
- 209m @ 7.39% from 154m (LEDD_04)
- 285m @ 6.07% from 0m (LEDD_08)
- **158m @ 10.13% from 16m (LERC_17)**
- 132m @ 8.73% from 0m (LEDD_01)
- 128m @ 8.58% from 45m (LERC_18)
- 137m @ 7.29% from 13m (LERC_13)
- 126m @ 7.44% from 52m (LEDD_02)
- 130m @ 6.28% from 0m (LERC_11)
- 114m @ 8.03% from 1m (LERC_31)

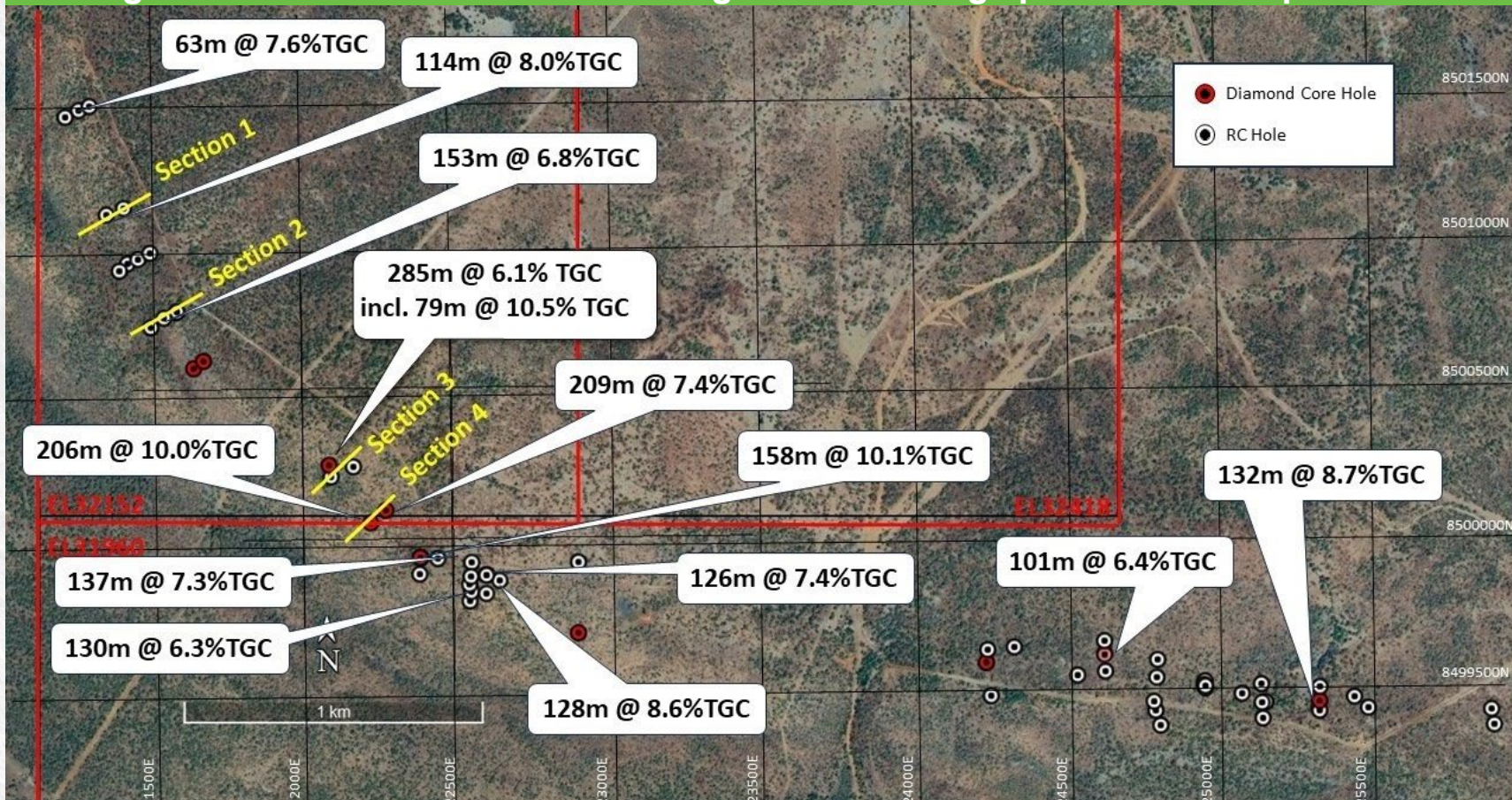


LEDD_05 TGC assays 26m – 35m¹

¹ ASX announcement 5 September 2023 'Bonanza intersection of 206m at 10% Graphite confirms Leliyn's world-class potential'

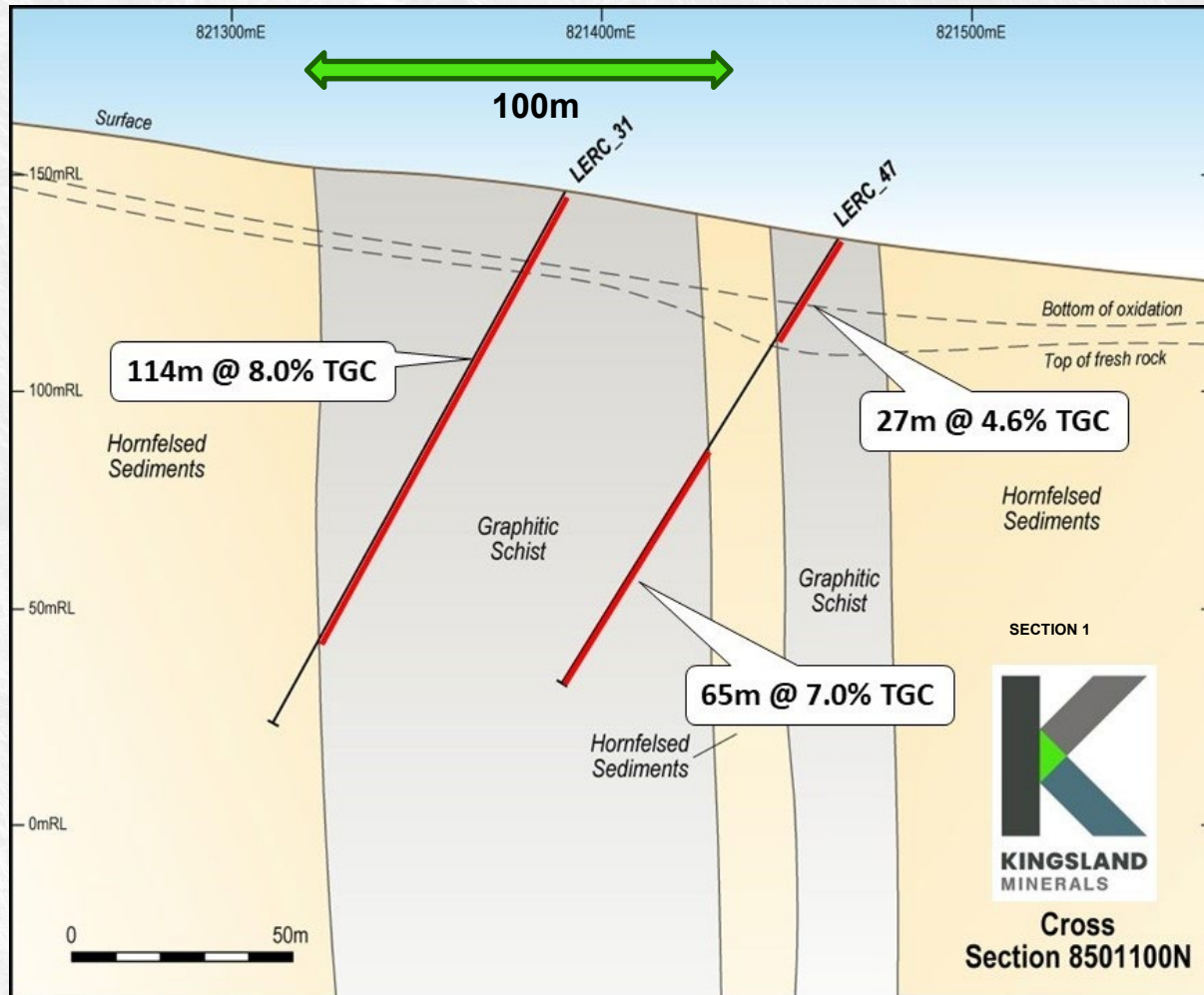
Leliyn Graphite

Average true widths of ~100m confirm significant tonnage potential of Graphitic Schist.



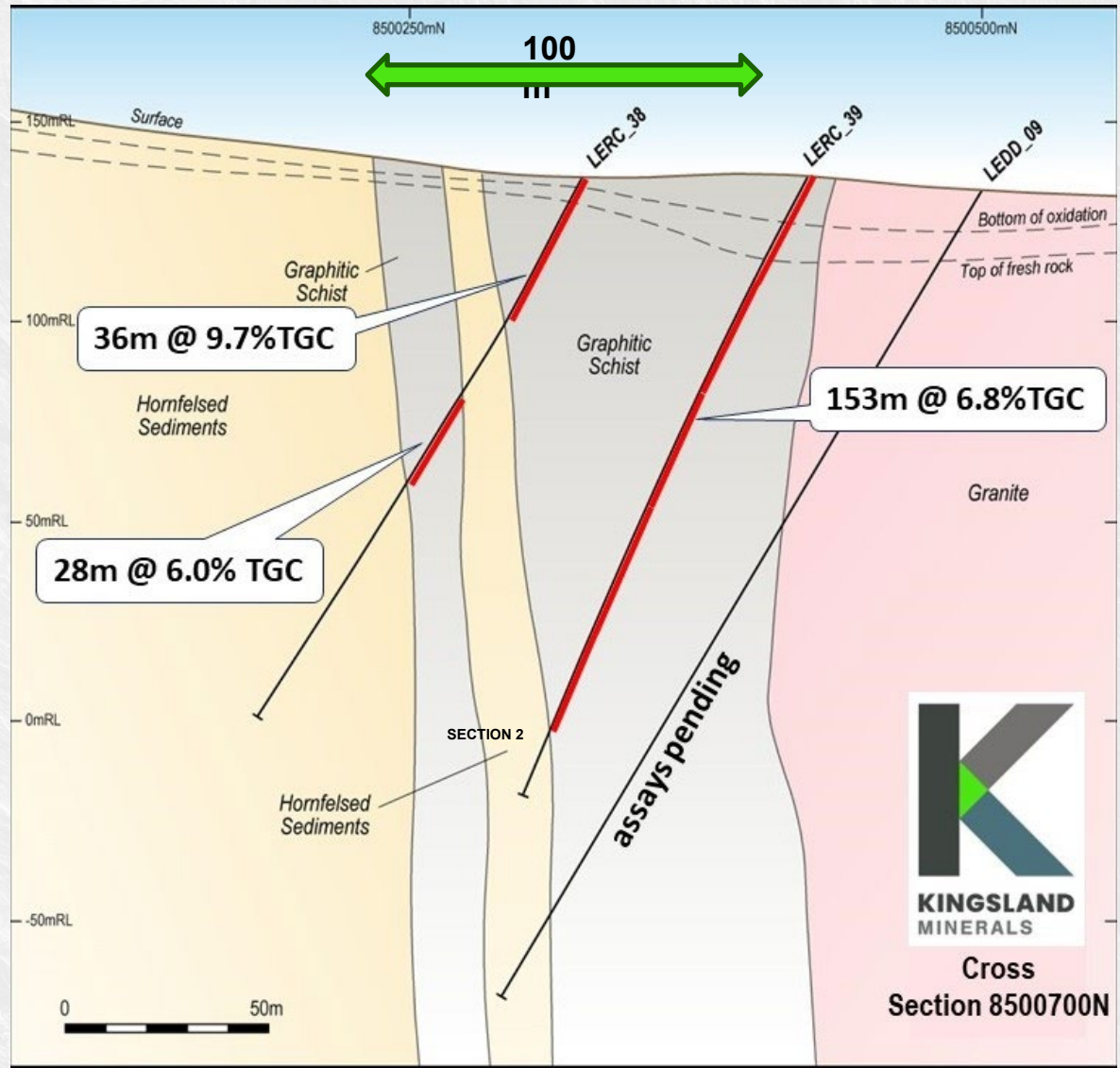
Exploration Target Area with drilling to date and location of cross-sections

Leliyn Graphite

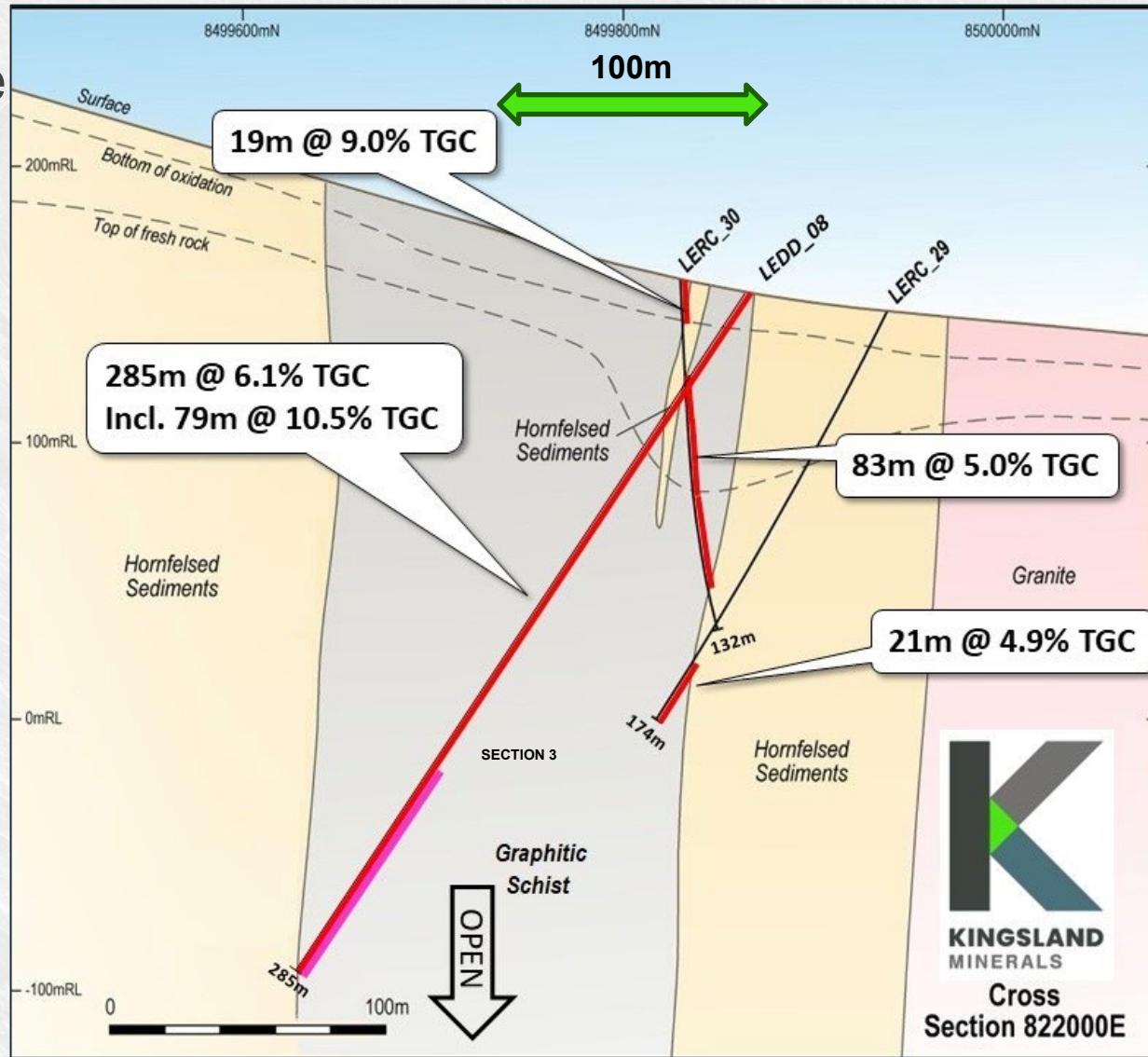


Simple geology, outcropping on surface, with true width of up to 150m

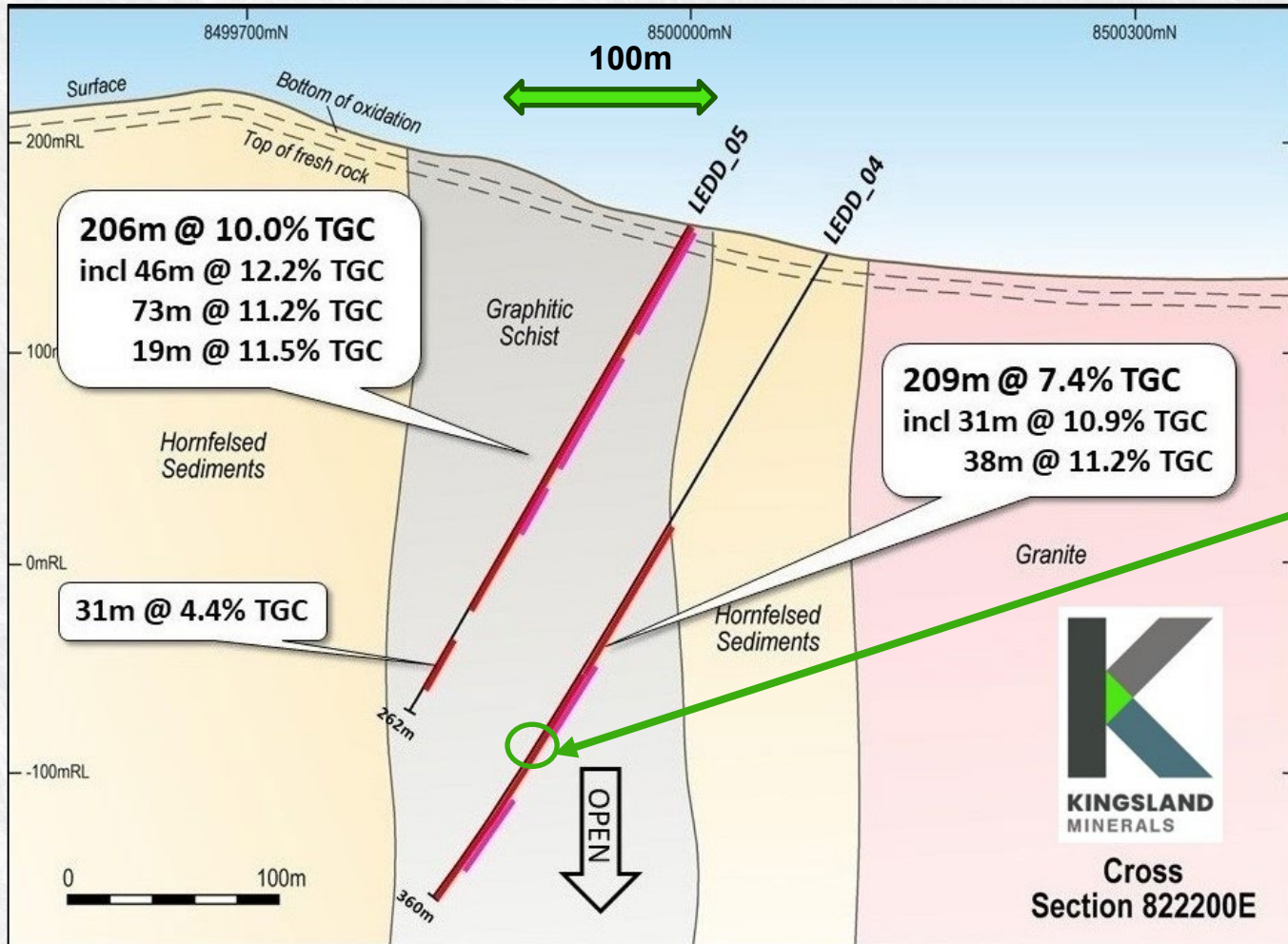
Leliyn Graphite



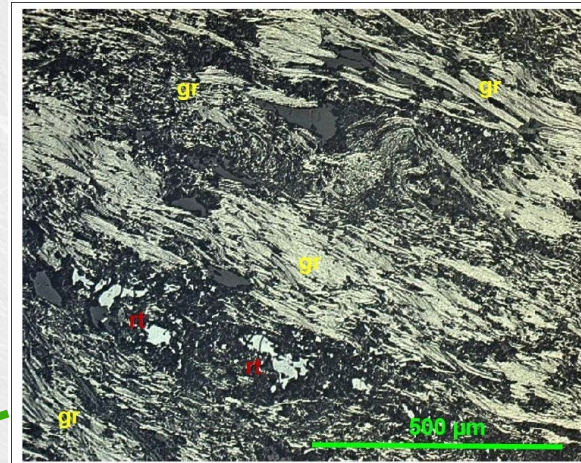
Leliyn Graphite



Leliyn Graphite



Petrography LEDD_04 310m showing graphite flakes



Sample LETS 053 310 m
 A detailed view showing concentrations of fine to medium flake graphite (gr) paralleling the C planes associated with a strain-slip cleavage. Accessory rutile (rt) has been imbricated as a product of deformation. Plane polarised reflected light. Field of view – 910 µm.

Leliyn Graphite

- ✓ Graphitic Schist ~100m wide
- ✓ Strike length 20km – Maiden Resource to be within 5km
- ✓ High-grade graphite – 206m @ 10% from 0m (LEDD_05)
- ✓ Outcropping at surface
- ✓ Steeply dipping, simple geology
- ✓ Open at Depth > 200m
- ✓ Average flake size 50-80 microns



Outcropping Graphitic Schist

Leliyn Graphite – Going Forward

- Drilling proving up tonnage and grade potential**
 - 2023 drilling program complete to provide sufficient data for Mineral Resource Estimation

- Samples collected for initial metallurgy**
 - Initial work for flotation recovery, concentrate grade and flake size analysis commenced (March qtr. 2024)

- Collecting samples for thin section petrography**
 - Provides mineralogy and flake size analysis for suitability of lithium-ion batteries

- Maiden JORC 2012 resource classification**
 - Commenced and due in March 2024 quarter

- Infill drilling to upgrade mineral resource classification**
 - Progress towards advanced studies, samples for more met work (2024)

- Advanced metallurgy test-work**
 - Assess optimal end-use for graphite concentrate, suitability for EV battery use (2024)

Leliyn Graphite



**Significant
Graphite
Discovery**



**Leliyn has scale,
Drill intersections
>200m**



**Leliyn has
location, NT
Australia**



**Tier 1 Project
in a Tier 1
Location**

Capital Structure

Listed 14 June 2022

58.3m

Shares on issue
(KNG)

18.7m

Options on issue
(KNGO)

\$3.7m

Cash
30 Sep 2023

\$15.2m

Market Cap
(\$0.26)
11 Nov 2023

\$11.5m

Enterprise
Value

Top 20 Shareholders



Major Shareholders

Directors	17.1%
Bacchus Resources Pty Ltd + related party	10.8%
Trafalgar Resources Pty Ltd	7.0%

Board of Directors



Richard Maddocks

Managing Director, MSc (Mineral Economics), BAppSc (Geology), Grad Dip (Finance & Investment), FAusIMM, GAICD

- Geologist with 30+ years of mining, development and exploration experience
- Geology Manager of large gold and nickel mines
- Experienced in business development, asset identification and resource estimation.



Bruno Seneque

Director, Company Secretary
B Bus, CPA

- Corporate finance professional with 25 years of experience
- Focused career of 23 years in the minerals industry
- Previously director of ASX listed Kairos Minerals operating in Pilbara of WA
- Significant experience as CFO of ASX listed mineral producers
- Former director of ASX Tyranna Resources, IronClad Mining, Fox Resources.

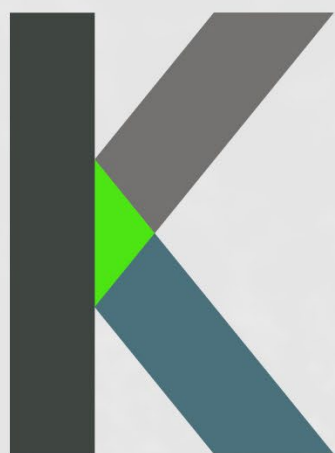


Nick Revell

Director BAppSc (Geology)

- Geologist with 30 years mining and geology experience
- Significant experience in production and exploration of gold, base metals and uranium.
- Former director of ASX Tyranna Resources, Orinoco Gold, Sunseeker Resources and Allup Silica.

ASX: **KNG**



KINGSLAND
MINERALS

Contact

kingslandminerals.com.au

info@kingslandminerals.com.au

+61 8 9381 3820

Competent Persons Statement

The information in this report that relates to Exploration Targets, Exploration Results, Mineral Resources or Ore Reserves is based on information compiled by Richard Maddocks, a Competent Person who is a Fellow of The Australasian Institute of Mining and Metallurgy. Mr. Maddocks is an employee of Kingsland Minerals and owns securities in the company. Richard Maddocks has sufficient experience that is relevant to the style of mineralisation and type of deposit under consideration and to the activity being undertaken to qualify as a Competent Person as defined in the 2012 Edition of the 'Australasian Code for Reporting of Exploration Results, Mineral Resources and Ore Reserves'. Richard Maddocks consents to the inclusion in the report of the matters based on his information in the form and context in which it appears.

The information in this announcement referring to previous graphite and gallium exploration results is extracted from the reports entitled 'First Holes Intersect 150m of Graphitic Schist' released 25 May 2023, 'First assays reveal extensive high grade graphite at Leliyn' released 15 June 2023, 'Extremely wide intersections with high grades at Leliyn' released 24 July 2023, '158m high grade intersection at Leliyn' released 16 August 2023, 'Diamond core assays confirm high grades over big widths' released 22 August 2023, 'Bonanza intersection 10% Graphite over 206m at Leliyn' released 5 September 2023, and 'Assays reveal significant Gallium by-product potential' released 27 September 2023, these reports are all available to view on www.kingslandminerals.com.au or on the ASX website www.asx.com.au under ticker code KNG. The company confirms that it is not aware of any new information or data that materially affects the information included in the original market announcement and in the case of estimates of Mineral Resources or Ore Reserves, that all material assumptions and technical parameters underpinning the estimates in the relevant market announcement continue to apply and have not materially changed. The company confirms that the form and context in which the Competent Person's findings are presented have not been materially modified from the original market announcement.

Information regarding the Leliyn Exploration Target is extracted from the report 'Graphite Exploration Target' created on 21 March 23. This report is available to view on www.kingslandminerals.com.au or on the ASX website www.asx.com.au under ticker code KNG. The company confirms that it is not aware of any new information or data that materially affects the information included in the original market announcement and, in the case of estimates of Mineral Resources or Ore Reserves, that all material assumptions and technical parameters underpinning the estimates in the relevant market announcement continue to apply and have not materially changed. The company confirms that the form and context in which the Competent Person's findings are presented have not been materially modified from the original market announcement.'

The Leliyn Graphite Exploration Target is based on historical drill results, petrographical analysis and field reconnaissance conducted by Kingsland. A drilling program, including both Reverse Circulation (RC) and Diamond Core drilling, is currently being conducted to progress the Exploration Target to a Mineral Resource Estimate, depending on successful drilling results. To date, a total of 53 RC holes (5,400m) and 11 Diamond core holes (2,400m) have been drilled. Drilling is scheduled to be complete in mid-November 2023.